



# Alex Hall-Chen

Principal Policy Advisor for Sustainability, Employment, and Skills at the Institute of Directors

Formerly Policy Advisor (Skills) at the Confederation of British Industry

Alex Hall-Chen is Principal Policy Advisor for Sustainability, Employment, and Skills at the Institute of Directors. Prior to her current role, she was a Policy Advisor (Skills) at the Confederation of British Industry.

Her background is in education policy and research, having first worked in education policy conference development and then for Education Development Trust in research and business development, including an secondment to work on monitoring and evaluation of a government education reform programme in Brunei Darussalam.

She holds an MSc in Comparative and International Education from the University of Oxford, with dissertation research conducted on English Medium Instruction policies in the UAE.

## Amy

Senior Talent Specialist at the Institute of Directors

Formerly Senior Talent Specialist at the Institute of Directors

Amy has been working in talent related roles within the visual effects industry across both the UK and Canada for many years. In each role she has had responsibility for working with schools, colleges and universities to provide careers guidance and support educators with content. She is a non-executive Director of Access:VFX, an industry organisation working to improve the diversity of the visual effects industry. She is also part of the steering group of the Next Gen Skills Academy who, with industry, launched a Level 3 Diploma in Games, Animation and VFX Skills and she took responsibility for working with NextGen to develop, launch and promote VFX apprenticeships. Recently Amy has been completed work as Chair of the T-Level panel for Media, Broadcast and Production. The panel was responsible for providing an employer perspective on the post-16 education landscape in the UK.

“L~”) >~~\$ ~”

ž L£ L™2LB˘Ÿs} L~“

, £~L~ 7 sLB˘, ^

Hello, I'm Ben Mannion, co-Owner and Director of Hewet Recruitment. I have approaching 20 years' experience of working within the recruitment industry, originally learning the trade with a large national agency before joining Hewet in 2009. My background is in IT & Technical recruitment and I originally joined Hewet to set up the IT and Engineering divisions which have since gone on to become key specialisms that we offer. I became a Director in 2013 and my role involves the development and support our Consultants as well as driving business development in a hands on way. I am also the point of contact for some of our sole supplier relationships – which has meant learning all about the fast paced world of Temp recruitment too! The reputation I have developed in the local area means I am well placed to support all of our clients' needs, including offering labour market intelligence, access to additional support services and a network of Exec level contacts. I particularly enjoy working with clients to educate them about how the labour market has evolved and helping develop solutions to their workforce planning challenges. Worcestershire born and bred – apart from 3 years away at the University of Cambridge where I completed a degree in Economics – I am proud to work in a business with a track record of excellence and that works hard to support the local community. Alongside my role at Hewet I am Chair of the Future Skills Board and a member of the Employment & Skills Board for Worcestershire LEP, Chair of the Cornerstone Employers Group and sit on the Local Skills Improvement Plan (LSIP) Board. I am also a Worcestershire Ambassador have previously been a Board Director and President of H&W Chamber of Commerce, Vice Chair of Worcestershire Advance and a member of the H&W Fundraising Committee for the Prince's Trust. Outside of work I am a big sports fan – in particular rugby and football – and enjoy spending time walking and exploring National Trust properties with my wife and 2 daughters.

f|} sŸ~\* , "" ~”

"~~, €>"L7%~

ž L>H, NfV "7/, n^>} } L%

Emily leads on Innovate UK's work to promote diversity and inclusion in business innovation. This involves initiating targeted interventions to address underrepresentation and identifying opportunities to make all of Innovate UK's support for business more visible and accessible. She has introduced high profile campaigns and programmes for Women in Innovation and Young Innovators and is currently working on No Limits, a new mission to unlock the power of untapped talents.

# Emma Jones

fl~"L^..^:Šbo\* > , ~~

## Founder

Since launching in 2005, the Enterprise Nat on team has helped thousands of people start and grow their businesses. Led by founder Emma Jones CBE, Enterprise Nat on operates in UK, Ireland, EU as a small business support plat orm and provider. Joining Enterprise Nat on connects you with resources, community and connect ons you need to reach your business goals.

# Ž L} } > Ž >"pL^B, L

## ACCA

3^>"Lnšfl~n>nL} L~"&L>H fl-n >-H

Gemma Gathercole is Strategic Engagement Lead (England) for ACCA (the Association of Chartered Certified Accountants). Her role is responsible for strengthening and shaping relationships with governments, devolved administrations and partners to enhance ACCA's reputation and profile with these stakeholders. In England, this is particularly focused on Mayoral Combined Authorities and Local Enterprise Partnerships.

niDouB hel@ e r Bpnttjio in p ACCA A the B A re b has A es in the educat on ahips lqs pe torK Her # rev ou

# Hollie

## Employer Advisory Group

Senior Lecturer, Business School, University of Derby

Hollie is a passionate advocate for digital skills and apprenticeships. She is an award-winning TEDx speaker, author and director of two digital companies - Purple Frog Systems and FraggieWorks. She is also the National Policy Skills Champion for the Federation of Businesses (FSB). Having originally read business studies at university, Hollie completed a Level 5 apprenticeship some 25 years later in her own organisation, using it as an opportunity to upskill her existing knowledge. As well as employing apprentices, she now has first-hand experience! Hollie has been an Enterprise Adviser for over 5 years, she chairs the Marches Careers Hub Steering Group and sits on various Employer Advisory Boards. Joining the Careers & Enterprise Company Employer Advisory Group is an opportunity to bring the small business voice to the table. She is keen to help break down barriers and ensure that the work ready skills required by all sizes of business are developed in careers programmes to bridge the gap between education and employers.

# Ian Browne

## Employer Advisory Group

Senior Lecturer, Business School, University of Derby

I lead early careers, school engagement and levy sharing services for LBG connecting with over 25,000 young people each academic year

# Irene Graham

3B> L Ÿ...!~%o"Ÿ"L ~

~ fl, ~

Irene is the founding CEO and a board director of the ScaleUp Institute, a private sector, not-for-profit company focused on making the UK the best place in the world to scale up a business. She is a former senior banker at Standard Chartered where she held both European and global managing director roles. She set up, ran and scaled several of the bank's key client and product businesses across its corporate and institutional bank and led several global M&A activities. Working internationally across Europe, the Americas, Middle East and Asia, living in Singapore for a period of time. During the height of the financial crisis was seconded to work across the banking industry where she led the Business Finance Taskforce and Better Business Finance which was responsible for, amongst other initiatives, the founding of the Business Growth Fund, SME Finance Monitor, and leading on developments in Open Banking, and the Small Business Act. She is a Visiting Professor of Entrepreneurship at Strathclyde University and holds a variety of non-executive director and advisory roles.

\$>~L Ž ^>"", ~

ˆs %p~ p>} AL^%oNˆ , } } L^BL ~

/ L.Ÿ"Ÿ/ sLB", ~ /ŸA sB/, sBŸ

Jane joined the BCC in 2017 to lead on business environment and skills policy for the UK network of 53 Accredited Chambers of Commerce and the 50,000 businesses they represent. She is passionate about shaping an education and skills system that supports young people to develop skills for great careers and that helps employers to train and develop their workforce. She leads on labour market policy, bringing employers and policy makers together on employment issues, including flexible and equitable workplaces. Jane joined the BCC from the Staffordshire Chambers of Commerce where, as Deputy Chief Executive, she led on regeneration, planning and infrastructure policy. During her career, Jane has led the delivery of a wide range of business support programmes helping thousands of firms of all sizes and sectors.



&S~L~2Sp>^H/po~ ~

5p>yLp>} ~

ž 2/ sLB', ~

Liane is the HR Director at Thakeham, covering the entire people remit across the business, from recruitment and wellbeing to performance management. She has worked for the organisation for the past five years during which time it has more than doubled its headcount through organic growth. Thakeham is a leading south of England strategic land promoter and housebuilder delivering sustainable homes and strong communities. With

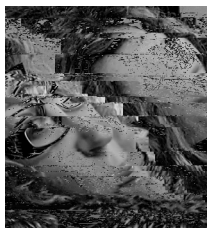


) > ^ \$ ~ > S / y o > ~ ^

5L%B ~

ž L>Hr, IV LqL, ..} L~"/^, n^>} } L%

Marie is passionate about achieving strategic business goals by creating a great colleague lifecycle that unlocks the opportunities for everyone to grow and develop resulting in a workforce that is engaged, empowered and advocates of our organisation. An inclusive manager that leads by example, when it comes to equality and fairness while always encouraging colleagues to be the best version of their authentic self. Marie is passionate about Tesco's commitment in developing young people and her current role is to lead the pipeline for the future of work through our Development Programmes including Graduate programmes, Apprenticeships, Internships and pre-employment work placements and continues to build our long running relationship with Partners such as Princes Trust and Movement to work



) \$pL L~/L^ys~%o

~ > .nL} s-s ~

/ sLB", ^5>L~"/ TM^>B, ~

Michelle is responsible for showcasing careers at Capgemini (and our industry) to a wide variety of candidates. Her particular passion is to support schools and colleges bring employer content into their curriculum and give students the four or more employer interactions that can be life changing. Each year Capgemini works with close to 30,000 students.





